



Has not been test stitched,
sorry. 😞

PATTERN SIZE

Up to 50 x 50 stitches

14 count: 3.6" x 3.6" in

16 count: 3.1" x 3.1" in

FINISHING SUGGESTION

Instructions on how to finish this
design as a flat ornament can
be found on my website.

<https://sirithre.com/how-to-make-a-cross-stitch-flat-ornament/>



SIRI[✕]OUS
STITCHES

@SIRITHRE



RNG MUSHROOMS

CROSS STITCH PATTERN



This pattern is for personal use only.

Please do not list this pattern or the completed stitch for online sale.

This is a free pattern available via <http://sirithre.com/free-patterns/>

CROSS STITCH TIPS

FIRST TIME STITCHING?

If you'd like a step by step on how to start stitching, check out my beginner's guide:

<http://sirithre.com/cross-stitch-beginners-guide/>

START FROM THE CENTER

To make sure your design is properly centered on your fabric, it's recommended to start from the center. To find the center of your fabric, fold it in half vertically, then horizontally. Where the folds meet is the center point. The pattern also has arrows pointing to the center to make it easier to figure out where to begin.

SPLIT YOUR THREAD

Embroidery thread is made up of 6 strands. It is recommended to only use 2 of those strands while cross stitching, and only 1 strand for backstitching.

Start by cutting a length of thread of the color you will be working with first. The ends of the string will start to fray and you should be able to grasp 2 of the 6 strands and pull them away from the rest. Use those two strands to thread your needle.

BE CONSISTENT

While not required, it is generally neater looking if you start all your Xs the same way. In other words, always stitch / first then cross it. Or always start with a \ and cross it the other way, whichever feels more comfortable to you.

DON'T BE AFRAID TO CUSTOMIZE

If you don't have all the colors called for in the pattern or simply feel the design would look better or fit your decor more with a different color palette, that's okay! Feel free to swap out colors as needed. I'd love to see how creative you can get with my design!

RNG Mushroom

10

20

30

40

50



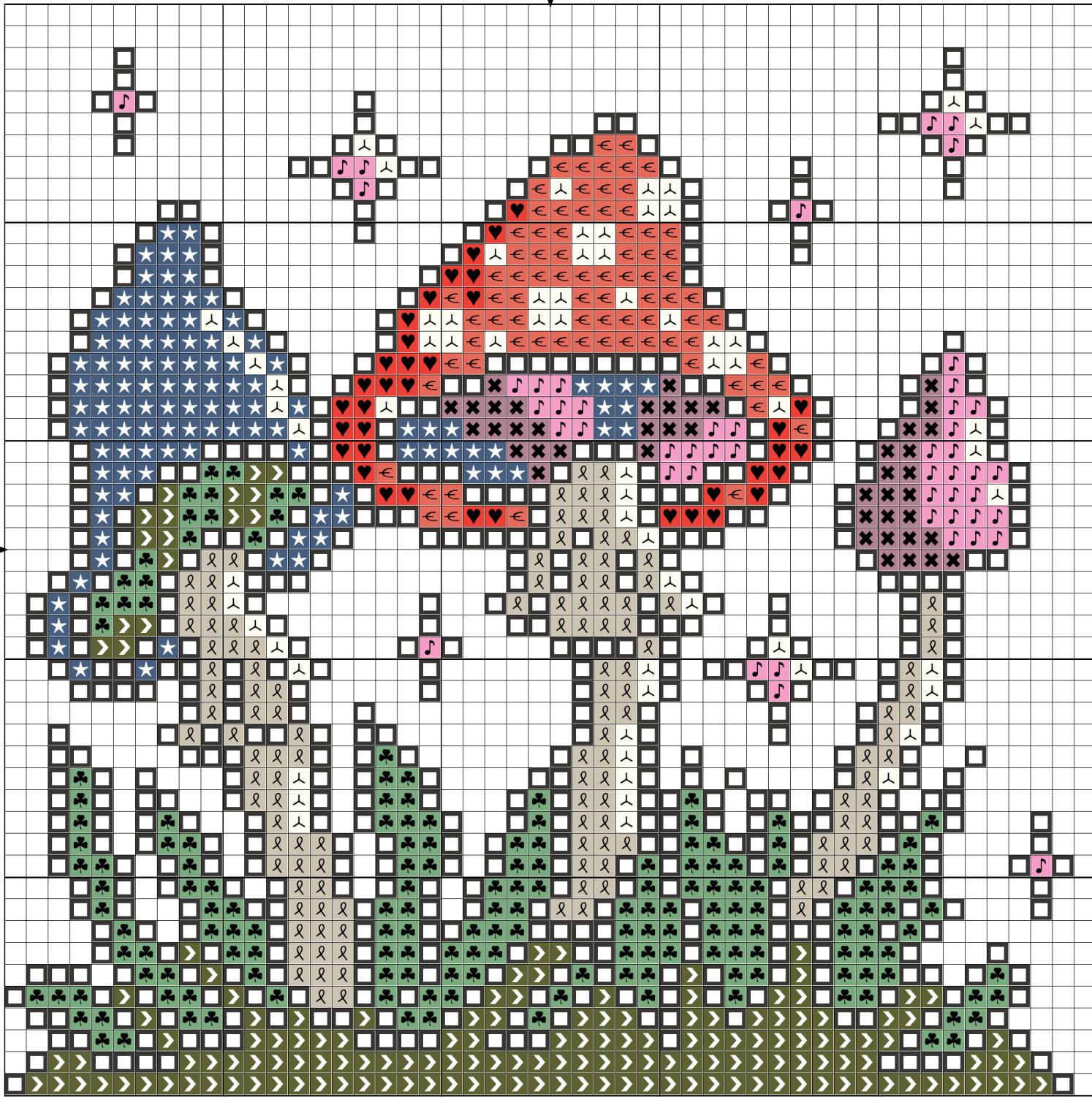
10

20

30

40

50



RNG Mushrooms

10

20

30

40

50



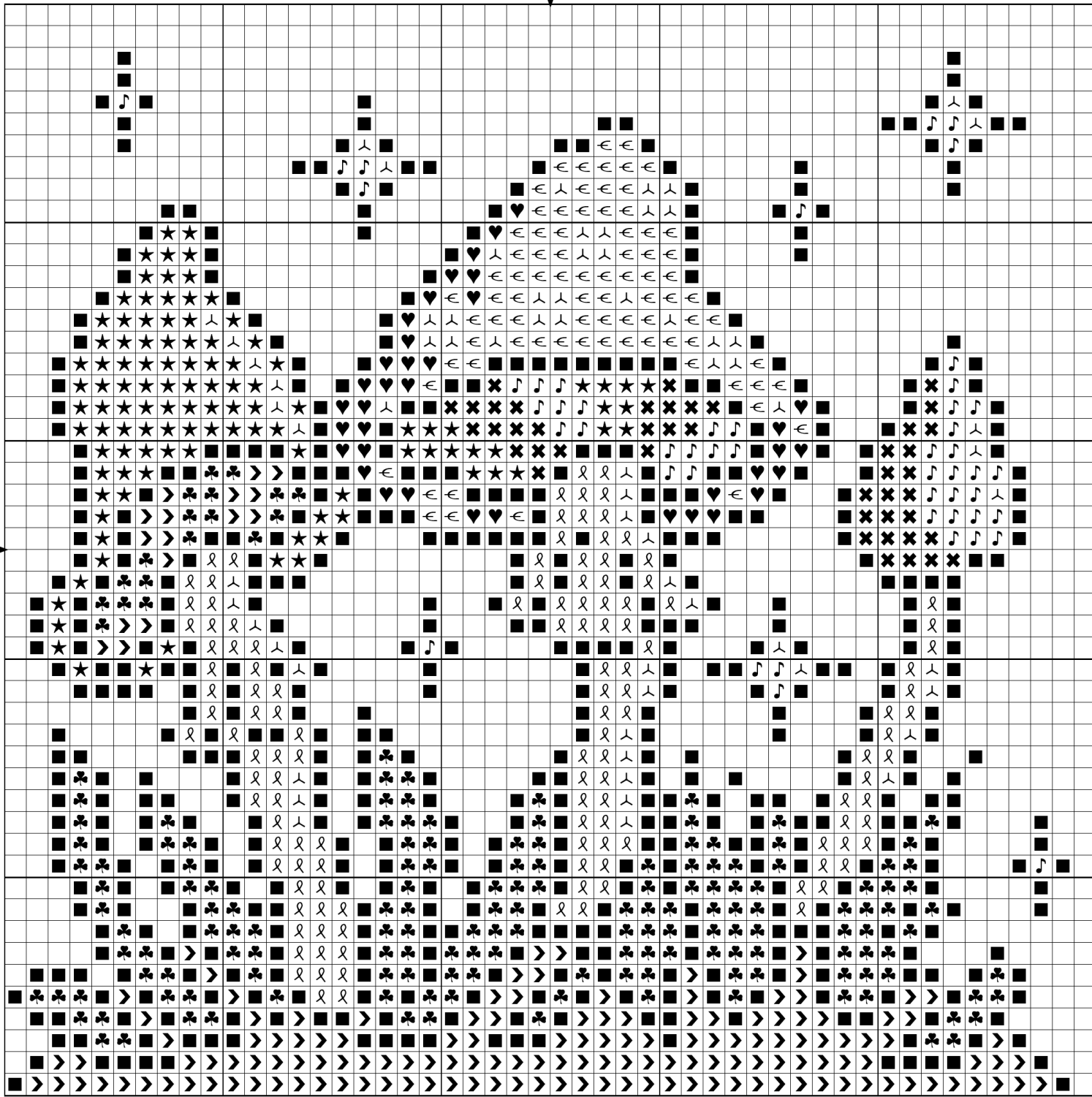
10

20

30

40

50



Color Chart - DMC

RNG Mushrooms – Sirithre

This design was made by randomly choosing a color palette and then designing using those colors as inspiration! As such, it features some unusual color combinations.

Please feel free to swap out colors for whatever you prefer!

Symbol	DMC #	Color	Stitches
✕	DMC 316	Antique Mauve - md	44
♣	DMC 320	Pistachio Green - md	174
♥	DMC 350	Coral - md	37
€	DMC 352	Coral -lt	81
★	DMC 931	Antique Blue - md	111
➤	DMC 3011	Khaki Green - dk	160
ℓ	DMC 3024	Brown Gray - vy lt	130
♪	DMC 3708	Melon - lt	50
■	DMC 3799	Pewter Gray - vy dk	562
∩	DMC White	White	67

Color Chart - Cosmo

RNG Mushrooms - Sirithre

Symbol	Cosmo #	Color	Stitches
∩	COS 110	Ivory	67
ℓ	COS 151	Oatmeal	130
✕	COS 234	Fawn	44
€	COS 342	Sunkist Orange	81
♪	COS 353	Candy Pink	50
♥	COS 445A	Amber Glow	37
➤	COS 685	Parsley Green	160
★	COS 734	India Ink	111
■	COS 895	Dark Shadow	562
♣	COS 2317	Forest Shade	174